

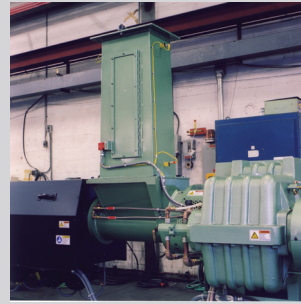


DAVIS-STANDARD®

Where your ideas take shape.



Reclaim



Scrap Reclaim Extruder

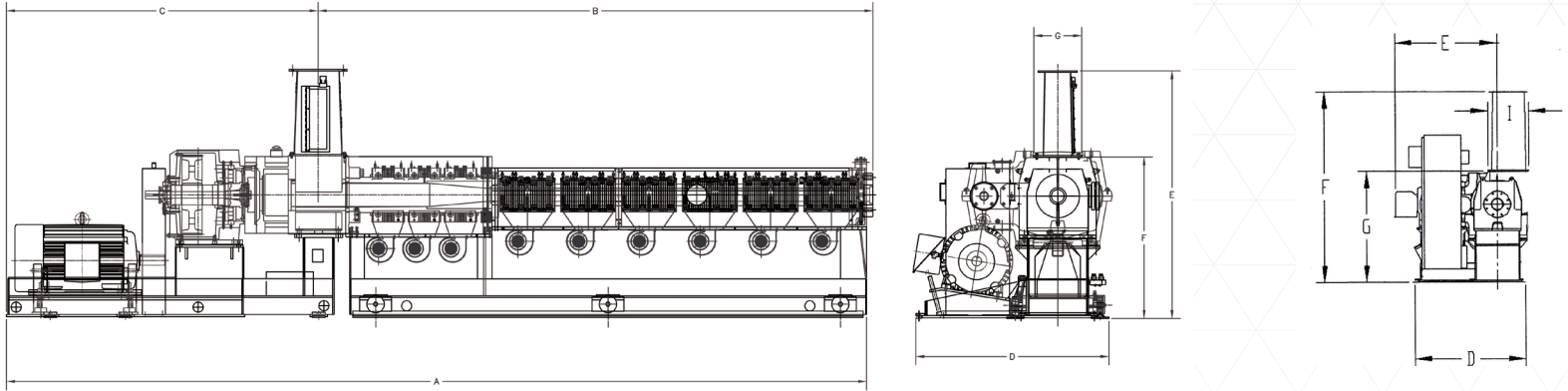
Overview

For light to medium bulk density feed stock, Davis-Standard has the Scrap Reclaim Extruder (S.R.E.). This extruder utilizes an extra wide tangential feed throat. A grooved horizontal liner creates a positive material conveyance through the use of specifically designed feedscrews. Heavier materials can be processed by using a starve-feed device.

Features

- Gear reducer, feed section, barrel and drive motor are mounted to a rugged base
- Aggressive feedscrew designs for increased production rates
- Barrels are bimetallic lined for long wear

Scrap Reclaim Extruder



Machine Design Parameters

| | | | | |
|------------------|---|--------------------------|---------------------------|--------------------------|
| | Size | 3 ½ in. (90mm) | 4 ½ in. (114mm) | 6 in. (152mm) |
| | L/D Ratio | 34:1 | 34:1 | 34:1 |
| | Standard Drive Size HP (kW) | 125 (93 kW) | 200 (149 kW) | 400 (298 kW) |
| | Reduction Ratio | 17:1 | 17:1 | 17:1 |
| | AGMA HP Rating @ 100 RPM | 119 (89 kW) @ 1.25 SF | 257 (192 kW) @ 1.25 SF | 400 (298 kW) @ 1.5 SF |
| | Thrust Bearing Avg. Life (Hours) @ 100 RPM, 5,000 PSI (344 bar) Continuous Operation | 57,800 hrs. | 78,880 hrs. | 66,625 hrs. |
| | Maximum Internal Barrel Pressure (psi) | 10,000 psi (689 bar) | 10,000 psi (689 bar) | 10,000 psi (689 bar) |
| Heat Zone Data | Barrel Zones | 6 | 7 | 7 |
| | kW/Barrel Zone | 11 | 15.6 | 24 |
| Production Rates | PE (lbs./hour) | 500 - 700 | 900 - 1,100 | 1,700 - 2,000 |
| | PP (lbs./hour) | 450 - 600 | 800 - 1,000 | 1,500 - 1,800 |
| | PS (lbs./hour) | 400 - 500 | 675 - 800 | 1,200 - 1,500 |

Machine Design Dimensions

| Size | 3 ½ in. (90mm) | 4 ½ in. (114mm) | 6 in. (152mm) |
|--------------|---------------------------------------|---------------------------------------|------------------------------------|
| A | 160 in. (4064mm) | 263 in. (6680mm) | 325 in. (8255mm) |
| B | 125 in. (3175mm) | 162 in. (4115mm) | 215 in. (5461mm) |
| C | 84 in. (2133mm) | 101 in. (2565mm) | 123 in. (3125mm) |
| D | 56 in. (1422mm) | 53 in. (1346mm) | 60 in. (1524mm) |
| E | 65 in. (1651mm) | 65 in. (1651mm) | 65 in. (1651mm) |
| F | 90 in. (2286mm) | 90 in. (2286mm) | 103 in. (2616mm) |
| G | 56 in. (1422mm) | 60 in. (1524mm) | 60 in. (1524mm) |
| H (L x W) | 10 1/2 in. x 7 in. (267mm x 178mm) | 13 1/2 in. x 9 in. (343mm x 229mm) | 18 in. x 12 in. (457mm x 305mm) |