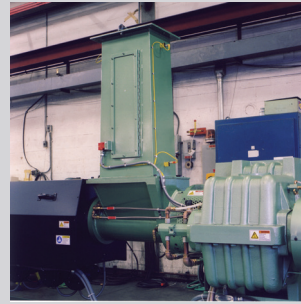




DAVIS-STANDARD®

Where your ideas take shape.

Reclaim



Scrap Reclaim Extruder

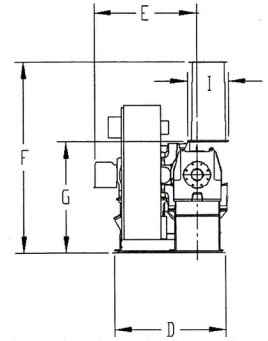
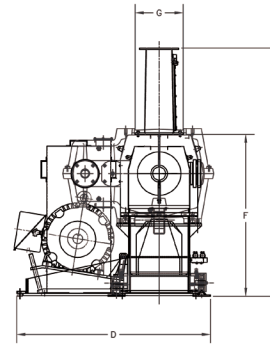
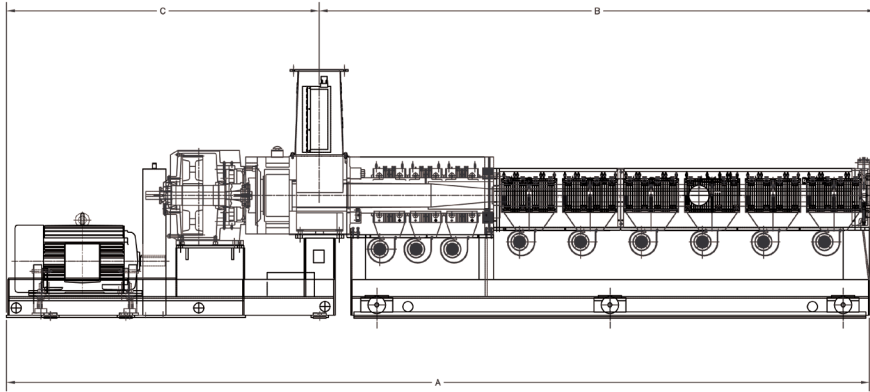
Overview

For light to medium bulk density feed stock, Davis-Standard has the Scrap Reclaim Extruder (S.R.E.). This extruder utilizes an extra wide tangential feed throat. A grooved horizontal liner creates a positive material conveyance through the use of specifically designed feedscrews. Heavier materials can be processed by using a starve-feed device.

Features

- Gear reducer, feed section, barrel and drive motor are mounted to a rugged base
- Aggressive feedscrew designs for increased production rates
- Barrels are bimetallic lined for long wear

Scrap Reclaim Extruder



Machine Design Parameters

Size	3 ½ in. (90mm)	4 ½ in. (114mm)	6 in. (152mm)
L/D Ratio	34:1	34:1	34:1
Standard Drive Size HP (kW)	125 (93 kW)	200 (149 kW)	400 (298 kW)
Reduction Ratio	17:1	17:1	17:1
AGMA HP Rating @ 100 RPM	119 (89 kW) @ 1.25 SF	257 (192 kW) @ 1.25 SF	400 (298 kW) @ 1.5 SF
Thrust Bearing Avg. Life (Hours) @ 100 RPM, 5,000 PSI (344 bar) Continuous Operation	57,800 hrs.	78,880 hrs.	66,625 hrs.
Maximum Internal Barrel Pressure (psi)	10,000 psi (689 bar)	10,000 psi (689 bar)	10,000 psi (689 bar)
Heat Zone Data	Barrel Zones	6	7
	kW/Barrel Zone	11	15.6
Production Rates	PE (lbs./hour)	500 - 700	900 - 1,100
	PP (lbs./hour)	450 - 600	800 - 1,000
	PS (lbs./hour)	400 - 500	675 - 800
		1,200 - 1,500	

Machine Design Dimensions

Size	3 ½ in. (90mm)	4 ½ in. (114mm)	6 in. (152mm)
A	160 in. (4064mm)	263 in. (6680mm)	325 in. (8255mm)
B	125 in. (3175mm)	162 in. (4115mm)	215 in. (5461mm)
C	84 in. (2133mm)	101 in. (2565mm)	123 in. (3125mm)
D	56 in. (1422mm)	53 in. (1346mm)	60 in. (1524mm)
E	65 in. (1651mm)	65 in. (1651mm)	65 in. (1651mm)
F	90 in. (2286mm)	90 in. (2286mm)	103 in. (2616mm)
G	56 in. (1422mm)	60 in. (1524mm)	60 in. (1524mm)
H (L x W)	10 1/2 in. x 7 in. (267mm x 178mm)	13 1/2 in. x 9 in. (343mm x 229mm)	18 in. x 12 in. (457mm x 305mm)