



DAVIS-STANDARD®

Where your ideas take shape.



Hot Melt Extruder

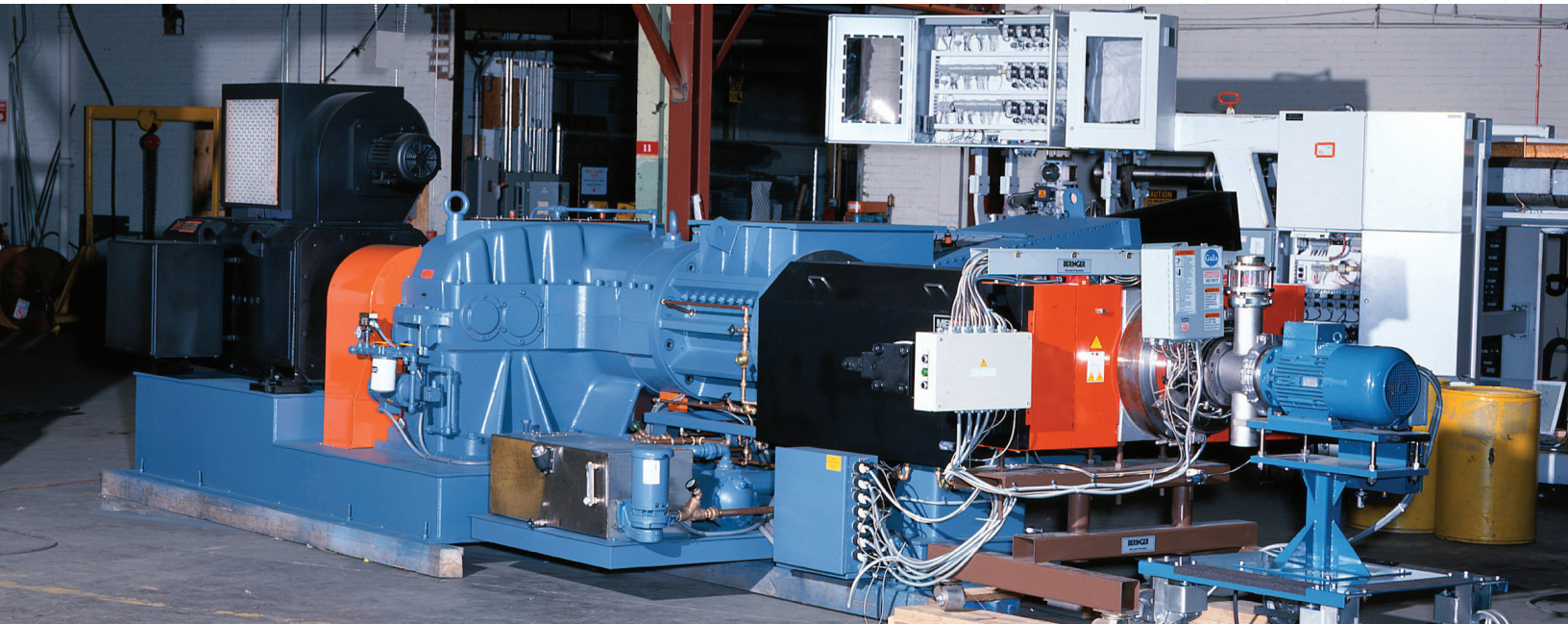
Overview

Davis-Standard's single screw hot melt extruders are engineered to accept plastics that have already been melted and compounded in a batch mixer or continuous compounder. Extruders feature a feed throat with a pneumatic ram to "stuff" material into the screw for batch feeds and an oversized tangential feed throat for continuous feeds. The feed area can be equipped with or without grooves for improved performance.

Features

- A throat opening that is 12 to 14 times the size of standard throat openings.
- Capable of batch, continuous, or rope feeds.
- L/D that is designed for specific applications.
- Vented barrel available to assist with issues related to volatiles.

Hot Melt Extruder



Features and Benefits

Hot melt extruders are available in diameters ranging from 6 to 12 inches (150 to 300mm). All models are equipped with large feed throats, which include a fabricated or ram-assisted L/D depending on materials requirements. Horsepower can also be adapted based on application.

These extruders are highly efficient as they minimize the addition of mechanical or thermal energy often associated with unwanted temperature increases. Melt temperature stability is easily achieved when combined with Davis-Standard's feedscrew designs and patented melt temperature control system.

