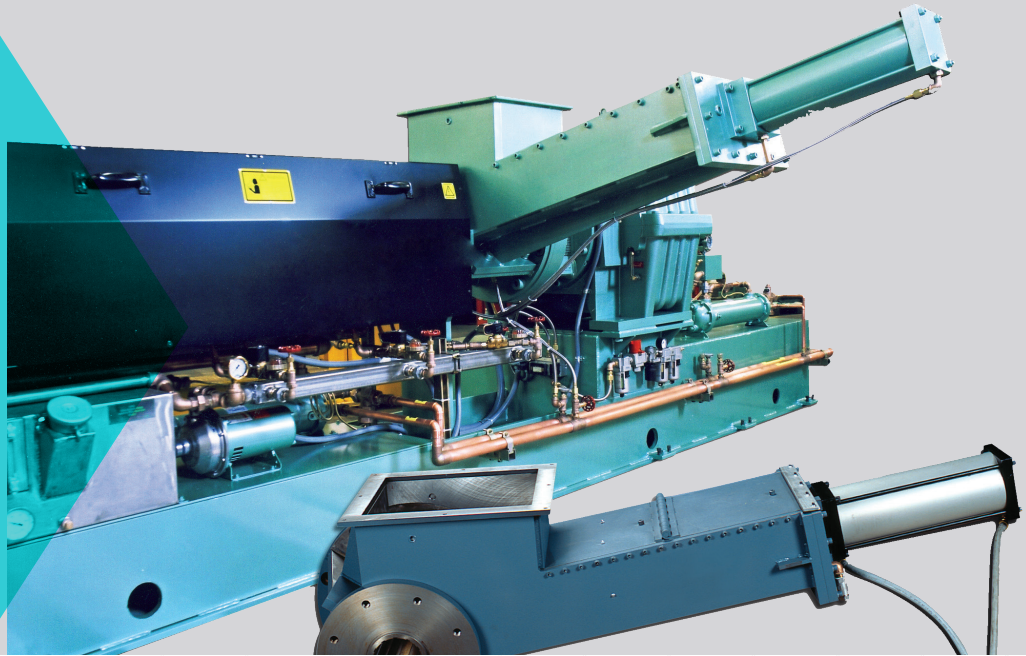




DAVIS STANDARD®

Where your ideas take shape.

Reclaim



Ram Stuffer Extruder

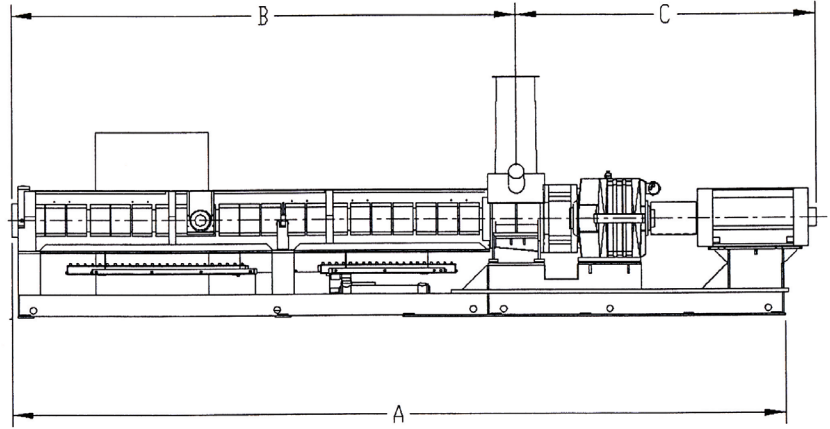
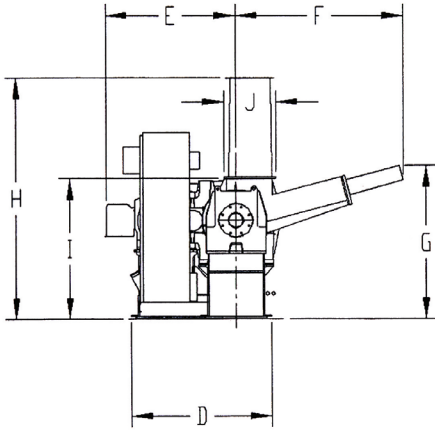
Overview

The Ram Stuffer single screw extruder is specifically designed for light feed stocks. The feed throat features a pneumatic ram to “stuff” material into the screw. Feed area designed with grooves for enhanced performance.

Features

- Throat opening 12 to 14 times the size of standard throat openings
- Low attack angle to maximize feed
- Pneumatically-operated ram
- Fully adjustable stoke cycle

Ram Stuffer Extruder



MACHINE DESIGN PARAMETERS

	3 ½ in. (90mm)	4 ½ in. (114mm)	6 in. (152mm)	8 in. LD (203mm)	8 in. HD (203mm)
Size	3 ½ in. (90mm)	4 ½ in. (114mm)	6 in. (152mm)	8 in. LD (203mm)	8 in. HD (203mm)
L/D Ratio	34:1	34:1	34:1	34:1	34:1
Standard Drive Size HP (kW)	150 (111 kW)	300 (224 kW)	600 (448 kW)	800 (597 kW)	1,200 (895 kW)
Reduction Ratio	17:1	17:1	17:1	17:1	17:1
AGMA HP Rating @ 100 RPM	257 (192 kW) @ 1.5 SF	400 (298 kW) @ 1.5 SF	700 (522 kW) @ 1.5 SF	1,420 (1059 kW) @ 1.5 SF	2,500 (1865 kW) @ 1.5 SF
Thrust Bearing Avg. Life (Hours) @ 100 RPM, 5,000 PSI (344 bar) Continuous Operation	421,000 hrs.	453,000 hrs.	509,000 hrs.	103,500 hrs.	1,146,000 hrs.
Maximum Internal Barrel Pressure (psi)	10,000 psi (689 bar)	10,000 psi (689 bar)	10,000 psi (689 bar)	10,000 psi (689 bar)	10,000 psi (689 bar)
Heat Zone Data					
Barrel Zones	6	7	7	7	7
kW/Barrel Zone	11	15.6	24	33	33
Production Rates					
PE Film (lbs./hour)	750 - 900	1,300 - 1,600	2,300 - 2,800	3,500 - 4,000	5,000 - 6,000
PP Film (lbs./hour)	500 - 650	800 - 1,100	1,500 - 2,000	2,500 - 3,000	4,000 - 5,000
Fiber (lbs./hour)	400 - 500	675 - 800	1,200 - 1,400	2,200 - 2,500	—

MACHINE DESIGN DIMENSIONS

Size	3 ½ in. (90mm)	4 ½ in. (114mm)	6 in. (152mm)	8 in. LD (203mm)	8 in. HD (203mm)
A	160 in. (4064mm)	263 in. (6680mm)	325 in. (8255mm)	395 in. (10,033mm)	428 in. (10,871mm)
B	125 in. (3175mm)	162 in. (4115mm)	215 in. (5461mm)	285 in. (7239mm)	285 in. (7239mm)
C	84 in. (2133mm)	101 in. (2565mm)	123 in. (3125mm)	125 in. (3175mm)	148 in. (3760mm)
D	56 in. (1422mm)	53 in. (1346mm)	60 in. (1524mm)	68 in. (1727mm)	106 in. (2692mm)
E	30 in. (762mm)	46 in. (1168mm)	57 in. (1448mm)	57 in. (1448mm)	57 in. (1448mm)
F	65 in. (1651mm)	67 in. (1702mm)	71 in. (1803mm)	92 in. (2337mm)	92 in. (2337mm)
G	65 in. (1651mm)	65 in. (1651mm)	65 in. (1651mm)	70 in. (1778mm)	70 in. (1778mm)
H	90 in. (2286mm)	90 in. (2286mm)	103 in. (2616mm)	120 in. (3048mm)	120 in. (3048mm)
I	56 in. (1422mm)	60 in. (1524mm)	60 in. (1524mm)	60 in. (1524mm)	60 in. (1524mm)
J (L x W)	10 1/2 in. x 14 in. (267mm x 356mm)	13 1/2 in. x 16 in. (343mm x 406mm)	18 in. x 18 in. (457mm x 457mm)	24 in. x 24 in. (610mm x 610mm)	24 in. x 24 in. (610mm x 610mm)