



DAVIS-STANDARD®

Where your ideas take shape.

Pipe, Profile and Tubing



Betopac Tubing System

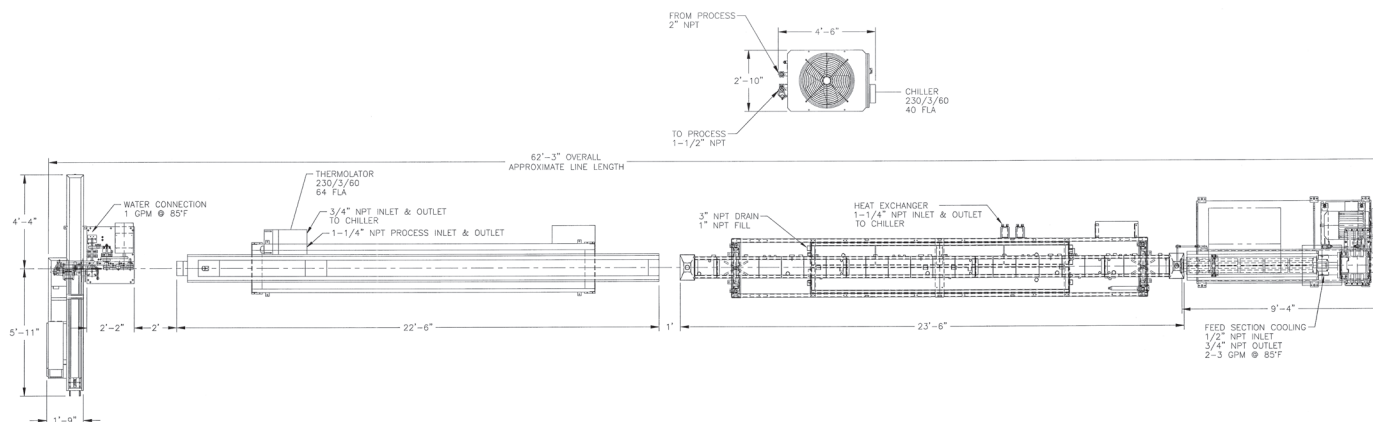
Overview

Davis-Standard's Betopac tubing systems are equipped for processing small serrated tubes such as cotton swab sticks or drinking straws from start to finish. The high speed Betopac is capable of packaging up to 5,000 sticks per minute. It also simplifies the downstream process by automatically placing sticks into a tray or box, staging them for a secondary process. In addition to the Betopac machine, line components include a high performance Davis-Standard extruder, extrusion die, and vacuum tank.

Features

- High speed production line with tight tolerances for small tubing processes.
- Take-off, cutting and bulk inline packing system minimizes operator involvement prior to transfer to the next production or distribution stage.
- Technology for paper wrapping and automated packaging of the final product also available.

Betopac Tubing System



Betopack Line Layout

Features and Benefits

Davis-Standard's equipment for manufacturing small tubes provides processors with a high-speed, exacting solution. Depending on product requirements, coextrusion lines with up to three separate extruders and related tooling can be custom engineered.

Specifications

PRODUCT: 2.5mm OD PP tubing

OUTPUT: Up to 5,000 sticks per minute is possible

MATERIAL: 3.0 MI Polypropylene

DESCRIPTION OF LINE COMPONENTS

Extruder

- 2 1/2-inch (63.5mm) 24:1 L/D Super Blue® extruder with 40HP (30kW) A/C drive
- Discrete control panel
- DSBM-T™ design barrier screws to provide high output and excellent melt stability and mixing

Extrusion Die

- Stainless steel construction
- Minimum inventory design
- Vacuum calibrator

Vacuum Tank

- 20-foot vacuum chamber with air wipe

BETOPAC

- Combined haul-off, cutter, and packing unit
- Servo vector motors for control of the puller belts and cutting head
- Specially designed packing head to guide cut tubes into a packing container

