



Where your ideas take shape.



Extrusion
Coating

Tandem Flexible Packaging Line

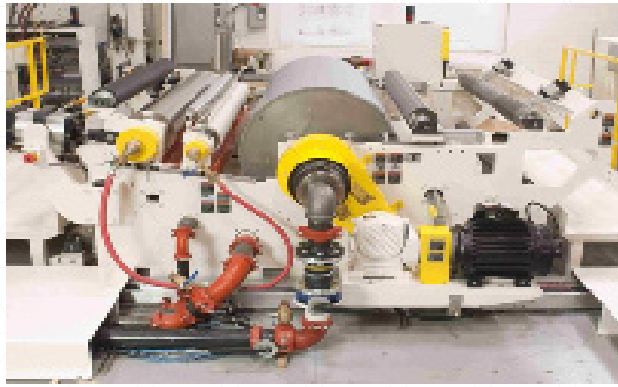
Typical Line Capabilities

- Extrusion coating and laminating of paper, film and aluminum foils
- Surface treatment by corona treating, chemical priming
- Process capabilities for LDPE, LLDPE (mono-extrusion)
- Process capabilities for Ionomer, PP, EVA, EMA, EVOH and others (co-extrusion)
- Tandem automatic die stations are available, with or without co-extrusion
- Co-extrusion using Cloeren or EDI feedback technology

Design Criteria

- Maximum web width – 2150mm (86 inches)
- Minimum web width – 1250mm (49 inches)
- Machine line speed – 450 mpm (1476 fpm)
- Max roll diameter – 1270mm (50 inches)
- Core shaft sizes – 76mm (3 inch), 152mm (6 inch)
- Web tension range – 2.7 – 27 kg (6 – 60 lb.)

Tandem Flexible Packaging Line



EQUIPMENT LIST

- Fixed arm turret unwind with integral splicer
- Automatic splicing control system
- Corona treater
- 2-roll direct /gravure roll coater
- 20-foot vertical roll support dryer
- Extrusion laminator with teflon belt
- Water recirculation system
- XYZ carriage base for single extruder
- 4 ½-inch 30:1 L/D air cooled extruder
- Resin loading and blending system
- Manual screen changers
- 90° valved adapters
- Feed pipes
- Extrusion die
- Smoke exhaust hood
- Beta gauge with APC
- Fixed arm turret winder with integral roll changer
- Main line console with Integrator PRO Supervisory Control System
- Programmable Logic Controller (PLC)
- Davis-Standard Secure Service Support System (DS⁵)
- Digital drive system
- Installation support
- Commissioning

OPTIONS

- 2 ½-inch 30:1 air cooled extruder
- 2 ½-inch 30:1 feed screw
- 2 ½-inch downstream including screen changer, valved adapter and feed pipe
- 5L fixed geometry feedblock

