



# DAVIS-STANDARD®

Where your ideas take shape.

## Extruders

### Thermatic® GF (Groove Feed Extruder)

#### Overview

Davis-Standard's groove feed extruder technology and patented DSB® barrier screw design offer processors a fully engineered solution for high-output applications. These high-performance extruders are based on Davis-Standard's popular Thermatic® design. Davis-Standard has made significant advancements in groove feed section design and barrier screw design to enable processing high-output low-melt temperature, improved mixing and homogenization, and linear output.

#### Features

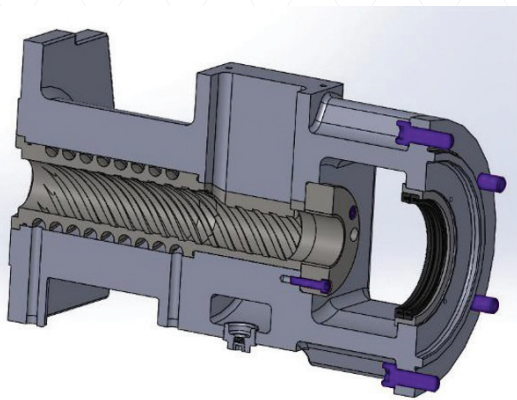
- Rugged, wear resistant, unitized groove feed housing with a removable and replaceable groove feed section.
- Groove feed technology for pipe and profile applications.
- Extruders available in sizes from 2 to 6 inches (50 to 150mm) in 42:1 L/D sizes.
- Advanced spiral groove feed section designed for processing HDPE, PP and other thermoplastic resins.

#### Advantages

- 40-70% higher output rate at lower processing temperatures.
- Improved energy efficiency resulting in approximately 25% savings.

[davis-standard.com](http://davis-standard.com)

# Thermatic® GF (Groove Feed Extruder)



Spiral Groove Feed Section



Corrugated Pipe



Small Walled Pipe

## Machine Design Parameters

Size	2-inch	2-½ inch	75mm	3-½ inch	100mm	4-½ inch	130mm	6-inch
Extruder Model	GF+ 38:1	GF+ 38:1	GF+ 38:1	GF+ 38:1	GF+ 38:1	GF+ 38:1	GF+ 38:1	GF+ 38:1
Actual Barrel Bore	50.8mm	63.5mm	75mm	88.9mm	100mm	114.3mm	130mm	152.4mm
Effective Barrel L/D Ratio	42:1	42:1	42:1	42:1	42:1	42:1	42:1	42:1
Barrel Zones	6	7	8	7	8	8	9	8
Screw RPM	200/225	187/223	187/200	153/175	153	100/125	88/100	84/100
*Max. Throughput Range, lbs./hr (kg/hr)	600 (270)	990 (450)	1,320 (600)	2,000 (900)	2,200 (1000)	2,420 (1100)	2,860 (1300)	3,600 (1650)

\* PE-100 Resin