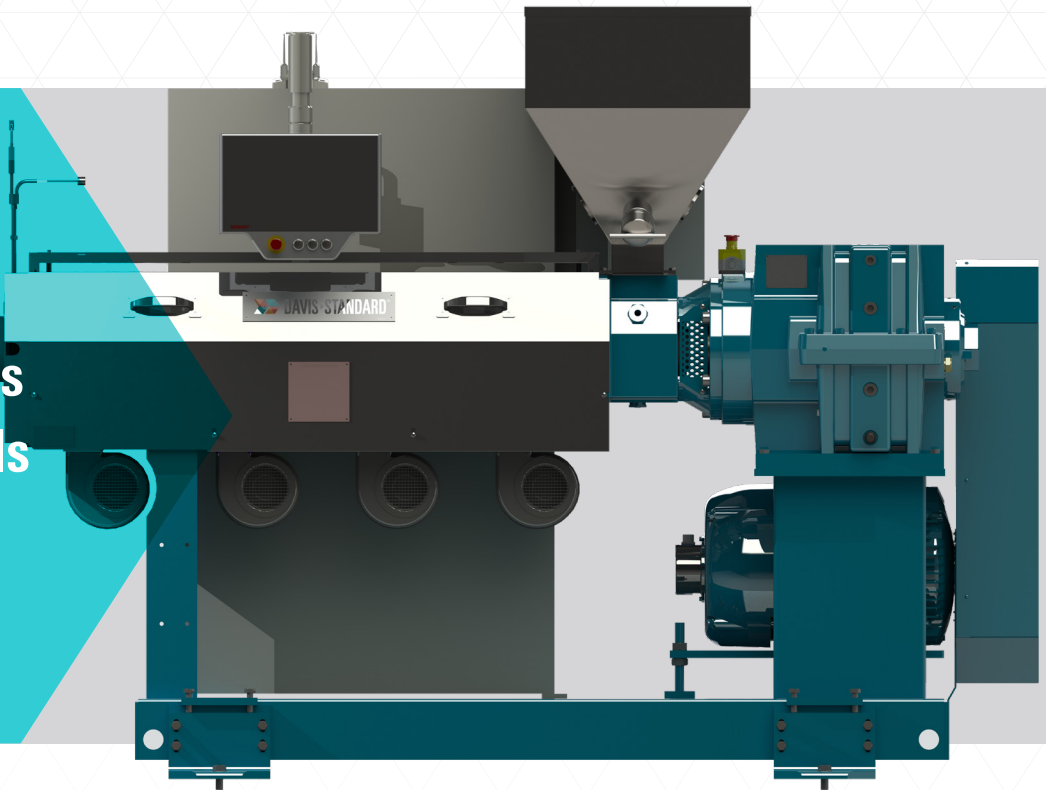




DAVIS-STANDARD®

Where your ideas take shape.

Process Controls



DS-XEL Extruder Control

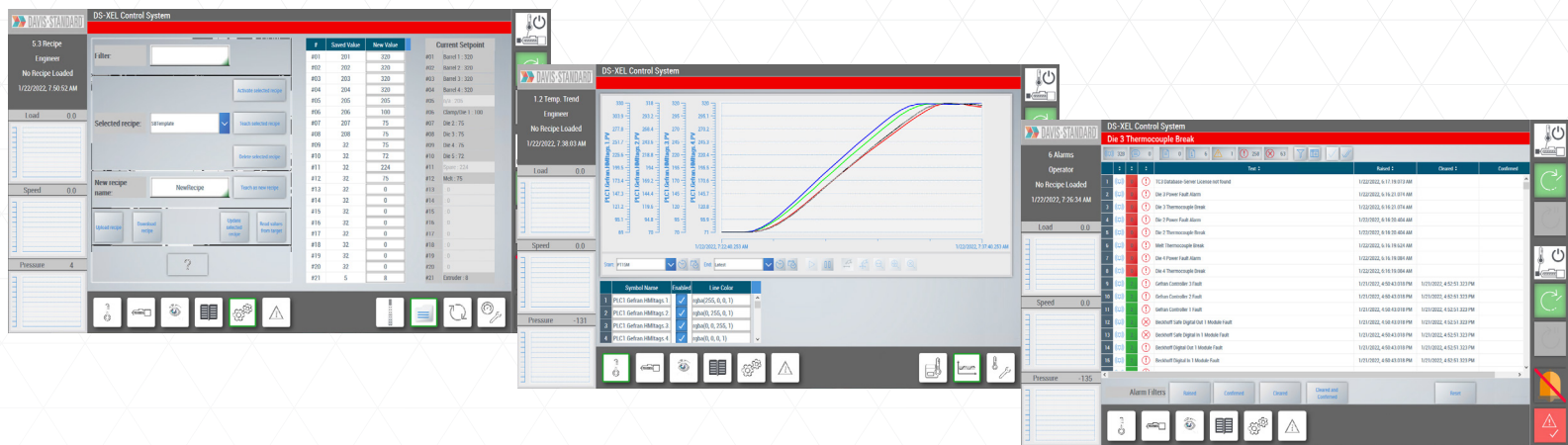
Overview

The DS-XEL control system is the new standard for extruder controls. The XEL features a high performance design approach that helps users be more productive by highlighting extruder key performance data and streamlining operating

features. It also supports connectivity to supervisory systems to allow users to collect real-time data for their manufacturing execution system (MES) or asset performance management (APM) systems.



DS-XEL Extruder Control



Features

- High-performance HMI design philosophy for enhanced operator experience. Allows operators to focus on relevant controls and data.
- Built in security to prevent unauthorized changes to system setup parameters.
- Multi-Language support built in.
- OPC-UA for easy supervisor system connectivity.
- Safety integrated into the PLC control system.
- Process alarm logging.
- Real time and historical trending.
- Data logging
- Recipe creation for product repeatability.
- IIoT licensing MQTT protocol
- Heater zone alarming – deviation, process, power fail, load fail, T/C break
- Monitoring of individual zone heater current draw
- Auto and Self tuning options per zone
- Extruder maintenance run timer
- Bar graph display of speed deviation from setpoint
- Min / Max and average motor load during a run

