



Thermoforming Systems LLC
A Davis-Standard Company

Servo Ejector

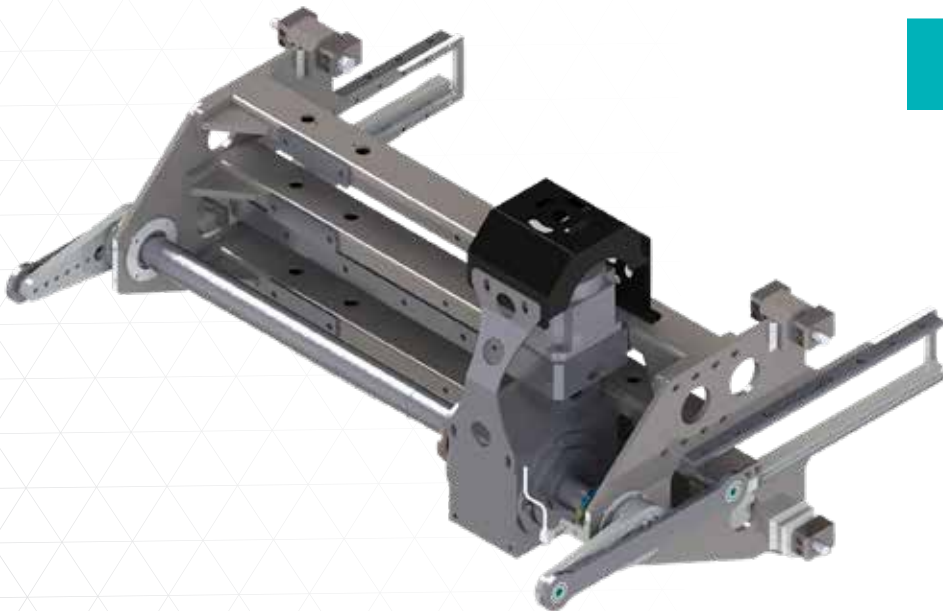
Easy integration to Optimize Your Downstream Process

In response to industry demands for increased efficiency and through-put in thermoforming lines, TSL introduces the Servo Ejector. The servo ejector functions by precisely cycling trimmed products forward, greatly minimizing the risk of them falling back into the trim. Once the desired product count is achieved, the ejector seamlessly moves the entire stack beyond the stationary platen into position, optimizing your downstream packaging processes.

With a stroke range of 9" to 19" (229 mm – 483 mm) and versatile compatibility with various equipment manufacturers, our servo ejector offers reliability and flexibility tailored to your system requirements. Choose between stand-alone controllers or fully integrated solutions to streamline your production setup and stay ahead in today's competitive market.

Applicable Processes:

Thermoforming, Rigid Packaging



KEY FEATURES



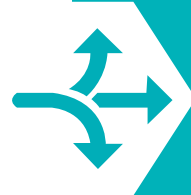
Cost Savings

- Reduce downtime
- Precise positioning for seamless downstream automation



Uptime

- Fewer products falling with trim
- Increase through-put



Flexibility

- Wide range compatibility with equipment
- Fully integrative with existing line



www.davis-standard.com
+1 860-362-2859