



# DAVIS-STANDARD®

Where your ideas take shape.



## Aftermarket Overview

### Overview

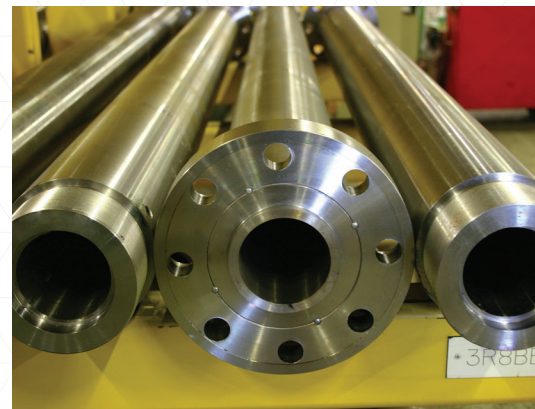
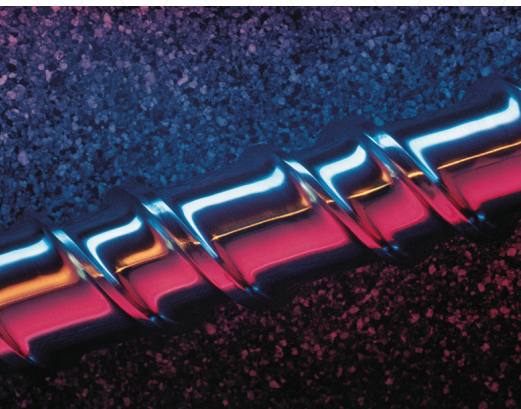
We pride ourselves in taking care of customers after the sale. Your investment in Davis-Standard machinery gives you access to outstanding customer service for the lifetime of your equipment. Whether you need to retrofit a feedscrew, add new capabilities, upgrade existing equipment or do preventative maintenance, our service team is here to support you.

### Global Services

- Die and head upgrades
- Process control upgrades
- Line upgrades
- AC drive and motor conversion
- L/D conversions
- Air-to-water conversions
- Internal Diameter Increase (IDI) conversion
- Feedscrew replacement and rebuilds
- Gearcase retrofits
- Preventative maintenance services
- Extensive spare parts inventory
- Operator training
- Equipment install and relocation
- 24/7 customer service

[davis-standard.com](http://davis-standard.com)

# Aftermarket Overview



## TECHNICAL SERVICES AND SPARE PARTS

Dependable service is part of our commitment throughout the life cycle of your equipment investment. We provide a one-stop parts and service center for maintaining, reconditioning and retrofitting your machinery.

## EXTENSIVE PARTS INVENTORY

Our vast inventory of mechanical and electrical spare parts ranges from feedscrews and barrels to thermocouples, heaters and motors.

## 24/7 CUSTOMER SERVICE

We believe you should have access to a person when you have a problem. Our service technicians are available 24 hours a day, seven days a week, to handle emergency parts inquiries and service needs.

## TIMELY RESPONSE

In-stock parts can be shipped within one business day. In the case of emergencies, we work with you to get your machinery up and running as soon as possible.

## TECHNICAL CAPABILITIES

Our mechanical and electrical engineers have a wealth of industry experience. They understand the intimate mechanics of equipment and control systems to provide reliable advice and efficient solutions.

## PERSONALIZED SERVICE

We offer single-source responsibility so you can come directly to us with any equipment question or issue. We also keep your data on electronic file to readily assist with spare parts quickly and easily. Do not hesitate to call if you need assistance with:

- Coordinating parts shipments
- Identifying correct mechanical and electrical components
- Requesting on-site service by a technician
- Installation support including testing, calibrating and start-up
- Spare parts service
- Preventative maintenance
- Equipment retrofits
- Equipment service

## DAVIS-STANDARD BRANDS

- |   |                                   |
|---|-----------------------------------|
| • Betol™                                    | • Harrel®                         |
| • Black Clawson Converting Machinery, Inc.® | • Hartig                          |
| • Brampton Engineering                      | • HES                             |
| • Circonix Technologies                     | • Kabel Teknik Ltd.               |
| • Clipper Machines®                         | • Killion®                        |
| • Davis-Standard®                           | • KU-KA-MA                        |
| • DS Brookes, Ltd.                          | • Maillefer                       |
| • Egan®                                     | • Merritt®                        |
| • ER-WE-PA™                                 | • NRM Extrusion®                  |
| • Francis Shaw                              | • Repiquet                        |
| • Floataire                                 | • Sterling®                       |
| • Gloucester Engineering Company            | • Thermoforming Systems LLC (TSL) |