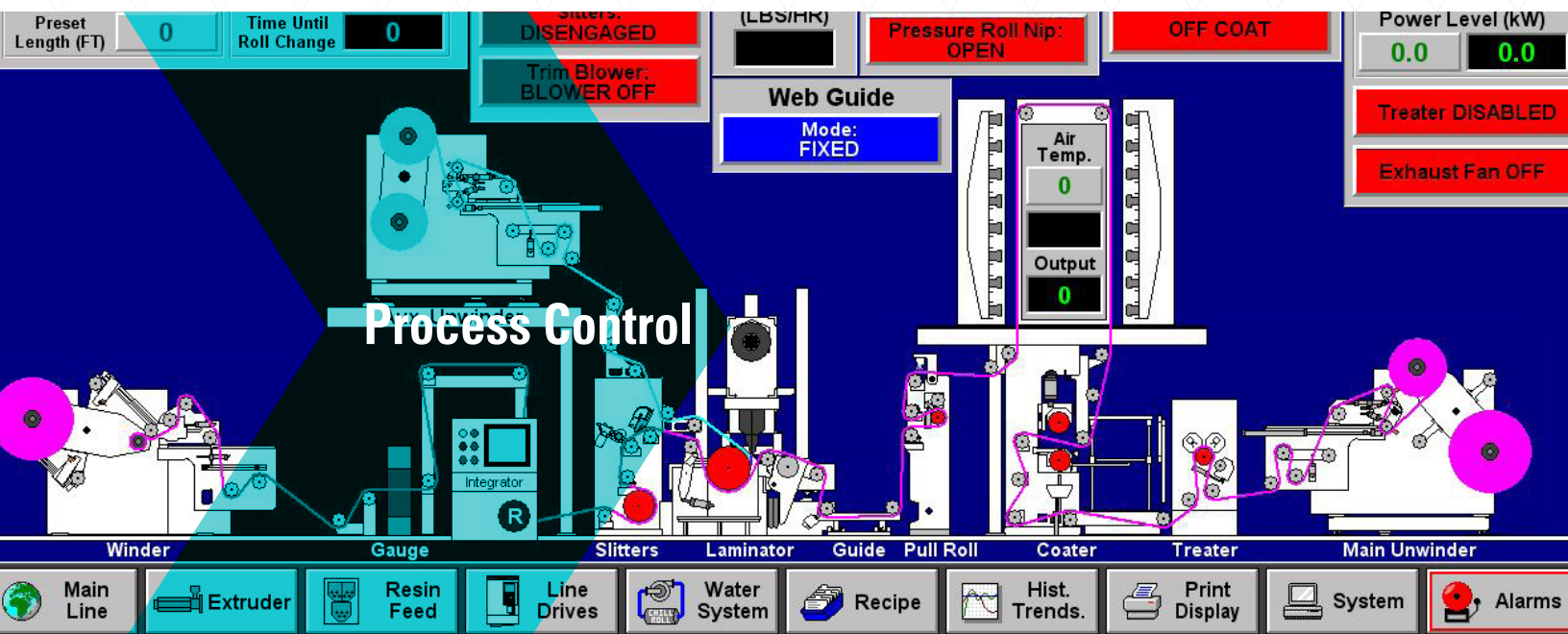




DAVIS-STANDARD®

Where your ideas take shape.



Process Control & Systems Integration

Overview

In the area of process control and systems integration, we've capitalized on the best technologies of Davis-Standard to offer multiple solutions backed by a team of programming specialists. Our systems are engineered in-house, giving us the flexibility to customize control packages to fit your specific process parameters and further improve upon performance, repeatability and control.

Features

Drives. Our systems engineers have first-hand knowledge of the converting industry and our drives reflect their insight. Benefits include:

- AC Vector, DC and Servo drives for new and existing machine lines
- Reduced start-up times
- A seamless drive system interface
- Increased productivity due to better accuracy, higher speed ranges and reduced maintenance

- Complete, accurate and cost-effective drive system integration solutions
- Single solutions even for the most complex applications
- Pre-wiring and testing reduces start-up times and costs

Controls. We are committed to supplying the most recent control technologies and high performance components. Across the board, our controls offer advantages that simplify your job.

- Operator and maintenance-friendly designs
- Expandable and flexible solutions
- Unlimited networks and communications
- ControlNet, EtherNet, Profibus, Modbus and more
- Remote troubleshooting access via modem and/or via internet connection (DS5)
- Intrinsically safe capabilities
- Can be designed for hazardous areas

davis-standard.com

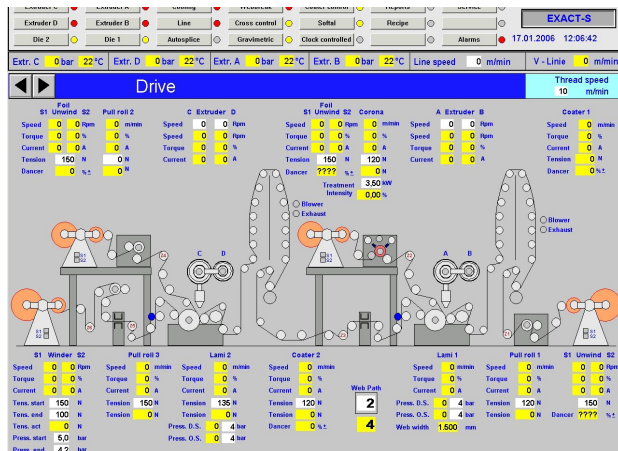
Process Control & Systems Integration

Feature - Integrator Pro

For the North American & Asian markets, Davis-Standard are offering the Integrator PRO. This innovative system combines total line control and data monitoring into one multi-functional information center. It is specifically designed for high-level converting processes encompassing cast film, blown film, extrusion coating, solvent and aqueous coating and drying.

Benefit

- Supervisory control that integrates all converting machine line components into a single user-friendly operator interface
- Graphics-based touchscreen interface
- Historical data tracking and system security
- Recipe management
- Process reporting
- Alarm and event logging, line and extruder diagnostics
- Standard PC computer hardware with Microsoft® Windows®
- Wonderware software engine
- Distributed architecture and system networking capabilities
- Individual machine component details
- Line drives display
- Water recirculation diagram
- Phone line and/or internet access



Feature - EXACT-S

For the European & Asian markets, ER-WE-PA is offering the EXACT-S system. EXACT-S is a modern process control that links all components of the line together. Your key to developing high-quality products is the simple and repeatable operation of your line.

Benefit

- Human Machine Interface
- Recipe system
- Alarming and reporting
- Historical and trending system
- Distributed client/server architecture
- High flexibility and open for alterations and extensions
- Automatic die control system
- Resin feed system with gravimetric capability

EXACT-S is based on standard components (hardware and software) and represents state-of-the-art automation.

Highlights include:

- Industrial PC based
- 32-bit operating system (W2K or XP)
- 32-bit application software (iFix™ from Intellution)
- Distributed client/server architecture
- Automation system with distributed I/O (Siemens S7)
- Use of standard bus systems (Ethernet and Profibus)
- High degree of flexibility and adaptability
- Open, expandable and compatible

Feature - DS⁵

DS⁵ is a comprehensive customer service using a safe and secure high speed internet connection.

Benefit

- Faster response time to our customer's needs
- Faster access time to diagnose and fix problems
- Our service personnel and engineers can connect to our customer's equipment from anywhere in the world
- Safe and secure internet connection
- Allows only our highly-trained and authorized users to access system
- Cost savings by avoiding long downtimes