



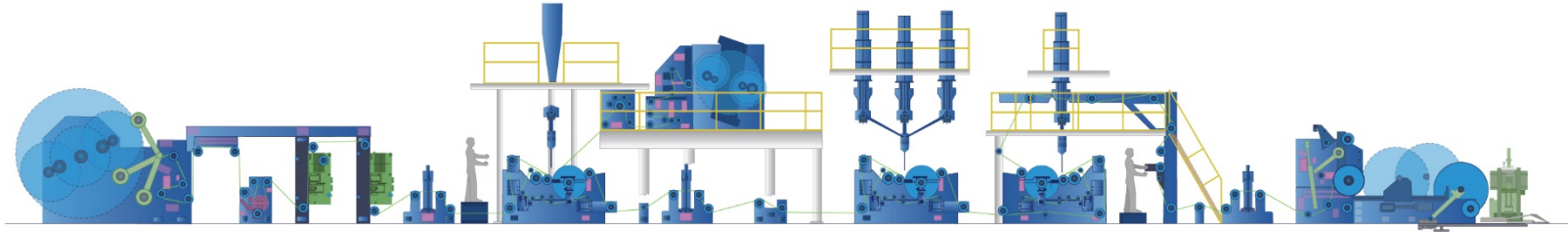
Aseptic Packaging

Global market leader in aseptic packaging
& process efficiency

Extrusion Coating Systems

Case Study - Typical Aseptic Packaging Line

Extrusion Coating Systems - Aseptic Packaging

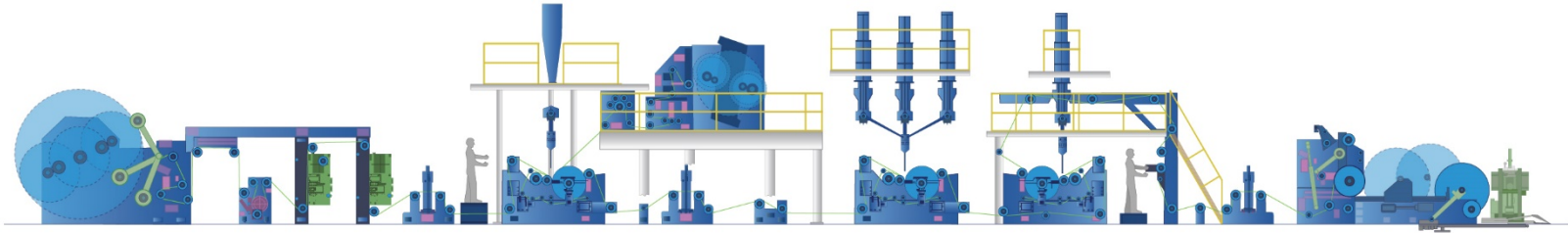


Aseptic Line

- Tailored design to address diverse structures, regulatory and business needs
- Technology for best-in-class speed, quick change and reduced waste
- Regional after-sales support / service centers
- Triplex extrusion coating and laminating line for paper, aluminum foils and/or film
- Surface treatment on both sides of the board
- Machine line speed - 350, 450, 600, or 800 m/min
- Maximum web width - 1350, 1650, 1900 mm
- Maximum roll diameter for paper - 1600 up to 2000 mm
- Shaftless unwind and winder
- Web tension range depending on substrate and width

Case Study - dsX™ Aseptic 400 Packaging Line

Extrusion Coating Systems - Aseptic Packaging

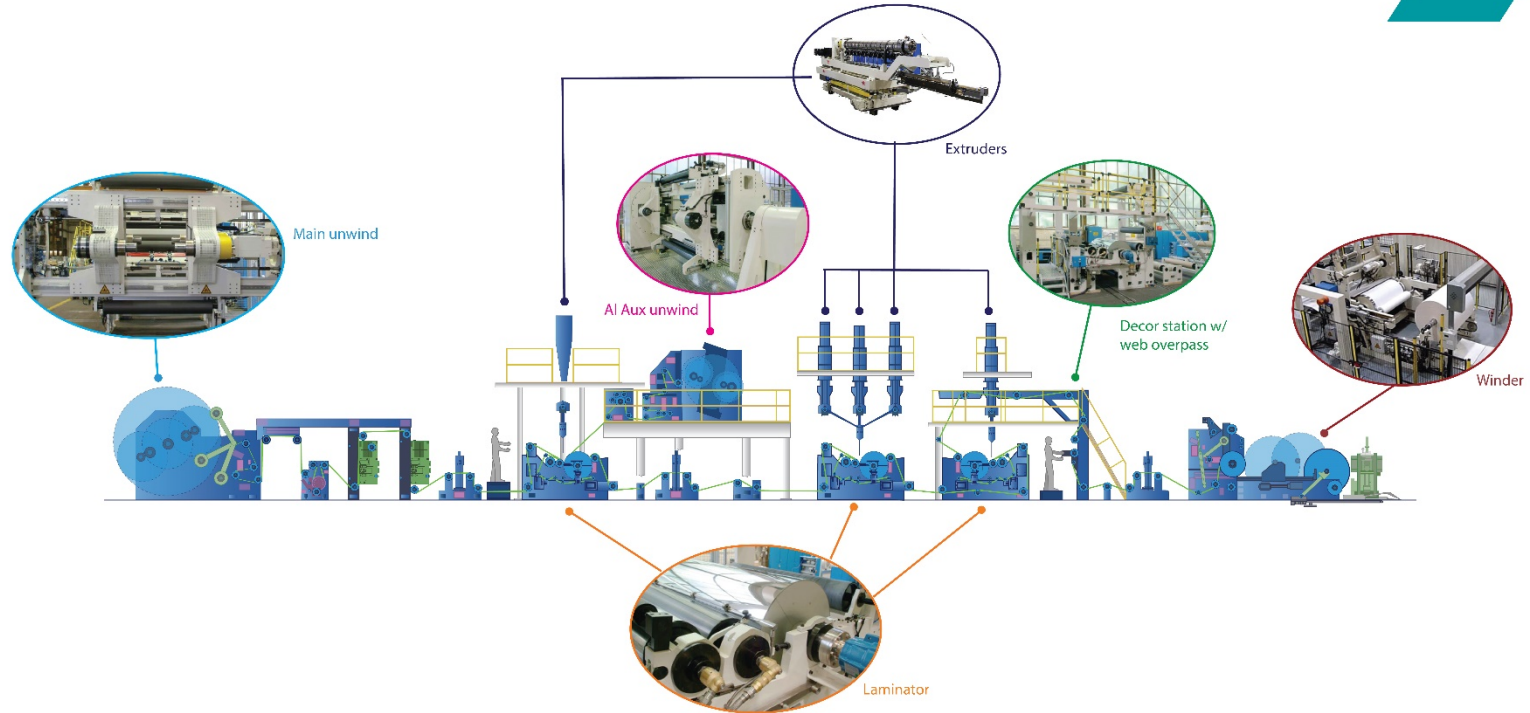


Aseptic Line

- Tailored design to address diverse structures, regulatory and business needs
- Technology for moderate output markets, quick change and reduced waste
- Regional after-sales support / service centers
- Triplex extrusion coating and laminating line for paper, aluminum foils and/or film
- Surface treatment on both sides of the board
- Machine line speed - 250 to 400 m/min
- Maximum web width - 1350 mm
- Maximum roll diameter for paper - 1600 mm
- Shaftless unwind and winder
- Web tension range depending on substrate and width

Case Study - Typical Aseptic Packaging Line

Extrusion Coating Systems - Aseptic Packaging



Davis-Standard Offers

Global market leader in aseptic packaging & process efficiency



Experience



Tailored Design



Technology



Global Support



Total Solutions

Let us tell you how...



Process & Application Experience

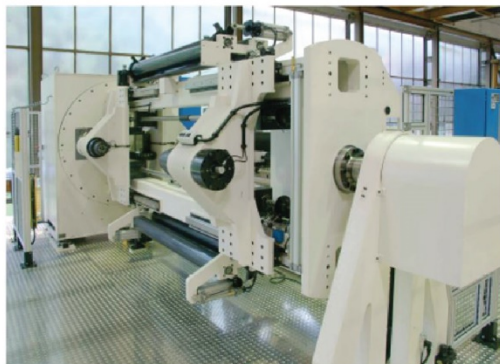
- Adapt & design to customer's structure & requirements
- Equipment design to match technical & business needs
 - Extruder package
 - Web handling
 - Reduce waste
 - Winder
 - Optimum roll quality
 - Laminator
 - Inside coating station
 - Decor coating station
 - Controls & drives
 - Ancillary equipment



Technology - Extrusion Coating Systems - Aseptic Packaging



Auxiliary unwind



Selected Features

- Reliable high speed splice for sensitive thin Al foil
- Short web pass into the laminator for stable production
- Dual direction roll change

Main unwind



Selected Features

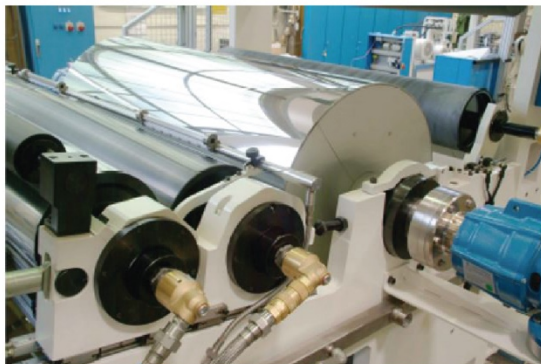
- Reliable high speed splice for reduced waste
- Dual direction splicing
- Minimize tail length



Technology - Extrusion Coating Systems - Aseptic Packaging



Laminator design



Selected Features

- Linear nip pressure for superior adhesion
- Quick roll change
- Chill roll design for best heat transfer
- Motorized teflon system for easy web width changes

Decor station with web overpass



Selected Features

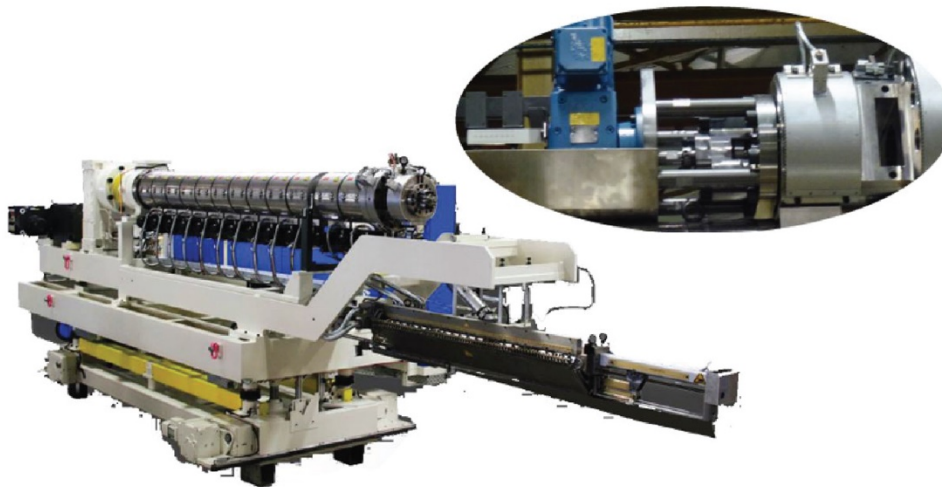
- Quick roll change
- Pneumatic actuated bridge



Technology - Extrusion Coating Systems - Aseptic Packaging



Extruder and screw design

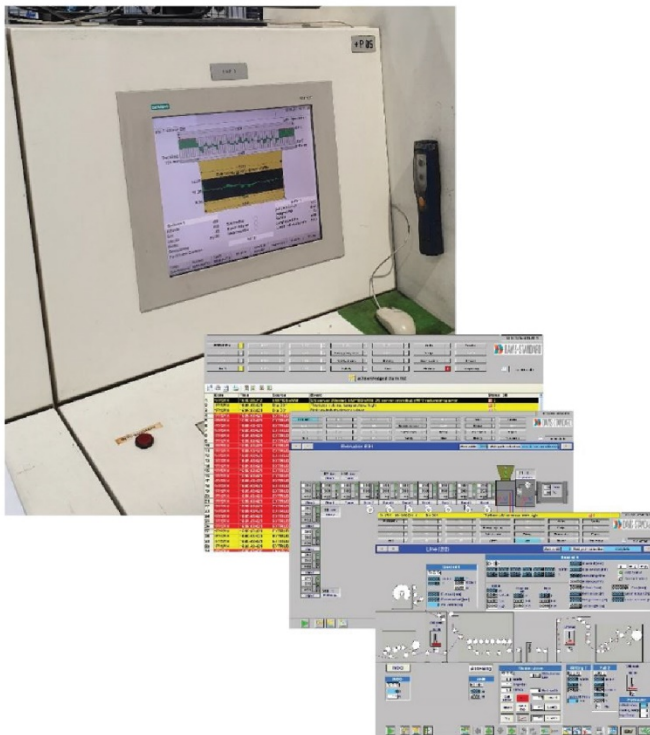


Selected Features

- 3-way motorized movable carriage
- Temperature control for melt quality
- Screw design for wide range of resins (including biodegradable resins)
- Motorized QSE adapter for safe & quick screw change



Technology - Extrusion Coating Systems - Aseptic Packaging



EXACT-S visualization system

Selected Features

- Recipe capability for repeatability
- Touch screen
- Custom controls for drives, pressures & gauging system
- Compatible with all industry analog & digital drives controls
- Historical data capture



Technology - Extrusion Coating Systems - Aseptic Packaging



Web handling



Selected Features

- Best-in-class speed from start to finish
- Optimized web path for less downtime
- Precision tension control for premium product quality



Technology - Extrusion Coating Systems - Aseptic Packaging



Winder



Selected Features

- Turret and surface type winders for premium product quality
- High speed knife for reliable web transfer
- Best-in-class speeds



We offer a Total Solution



Stewardship - Start to Finish

1

PRE-SALE SUPPORT

- Tailored design based on customer technical & business needs
- Pricing, timing and delivery options presented

2

PROJECT MANAGEMENT

- Workflow, process integration to track build & delivery time
- Frequent 2 way communication

3

INSTALLATION & COMMISSIONING

- Davis-Standard teams are the most experienced/skilled in the industry
- Operator & maintenance training

4

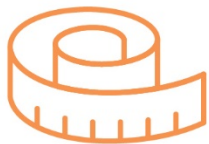
AFTERMARKET

- Low cost of total ownership
- Regional locations for quick spares & support



24/7 Emergency Support Request +1 844 MY DAVIS (+1 844-693-2847)

Collaborative Partner for your Entire Line



Tailored Solutions

Partnership to take standard offering & tailor to customer's business & technical needs

Innovation Starts Here

Davis-Standard has mastered the art of working with progressive customers and industry partners to break old paradigms and develop extrusion and converting product platforms that provide a competitive advantage.

Customization Is Key

Major components of our extrusion lines are often tailored to address specific customer needs. This can be as simple as combining existing design elements in a unique way or developing a new solution to enhance existing capabilities.

Packaged Solutions

From concept to reality, experienced engineering teams turn specific objectives into high performance manufacturing solutions. Well-equipped pilot facilities enable customers to test and prototype concepts, building a foundation of confidence.

Technology Leadership

By consistently reviewing technology fundamentals, Davis-Standard addresses major industry trends of industry 4.0 & productivity improvements.





Research & Technical Centers



Extruder List

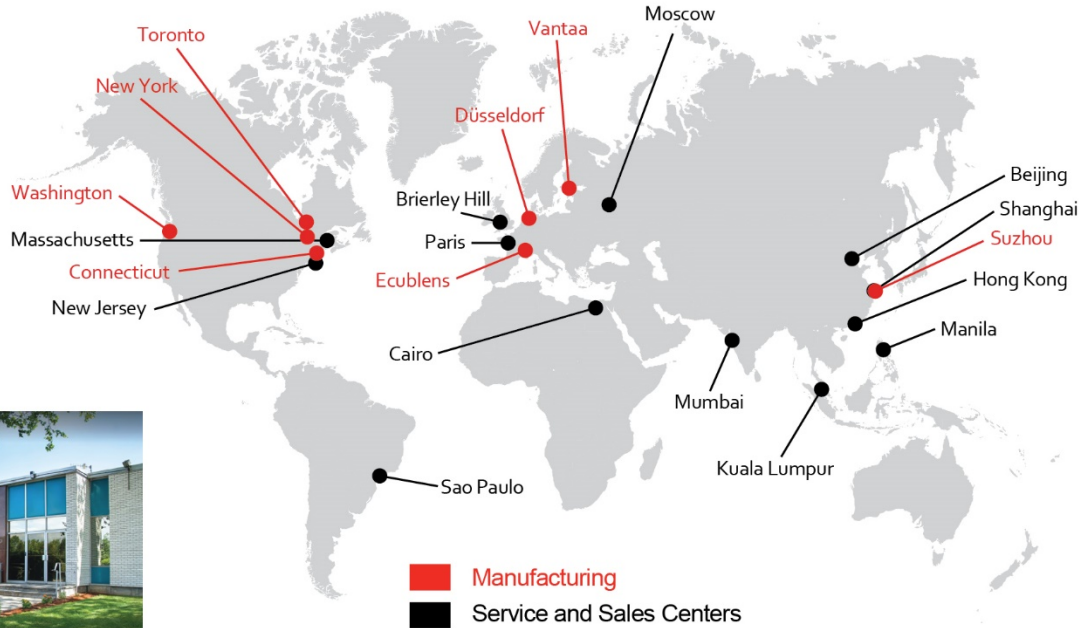
- 3/4 inch extruder
- 1 inch extruder
- 2.5 inch direct drive extruder
- 2.5 inch high speed extruder
- 2.5 inch Helibar extruder
- 3.5 inch extruder (smooth & grooved feed)
- 4.5 inch extruder



Davis-Standard - A Global Company

Production Across Three Continents

- Quick Response Parts & Service



Pawcatuck, CT, USA



Fulton, NY



Suzhou, China



Erkrath, Germany

24/7 Emergency Support Request +1 844 MY DAVIS (+1 844-693-2847)

Thank You!



Aseptic packaging

Start your journey with Davis-Standard
Where your ideas take shape.