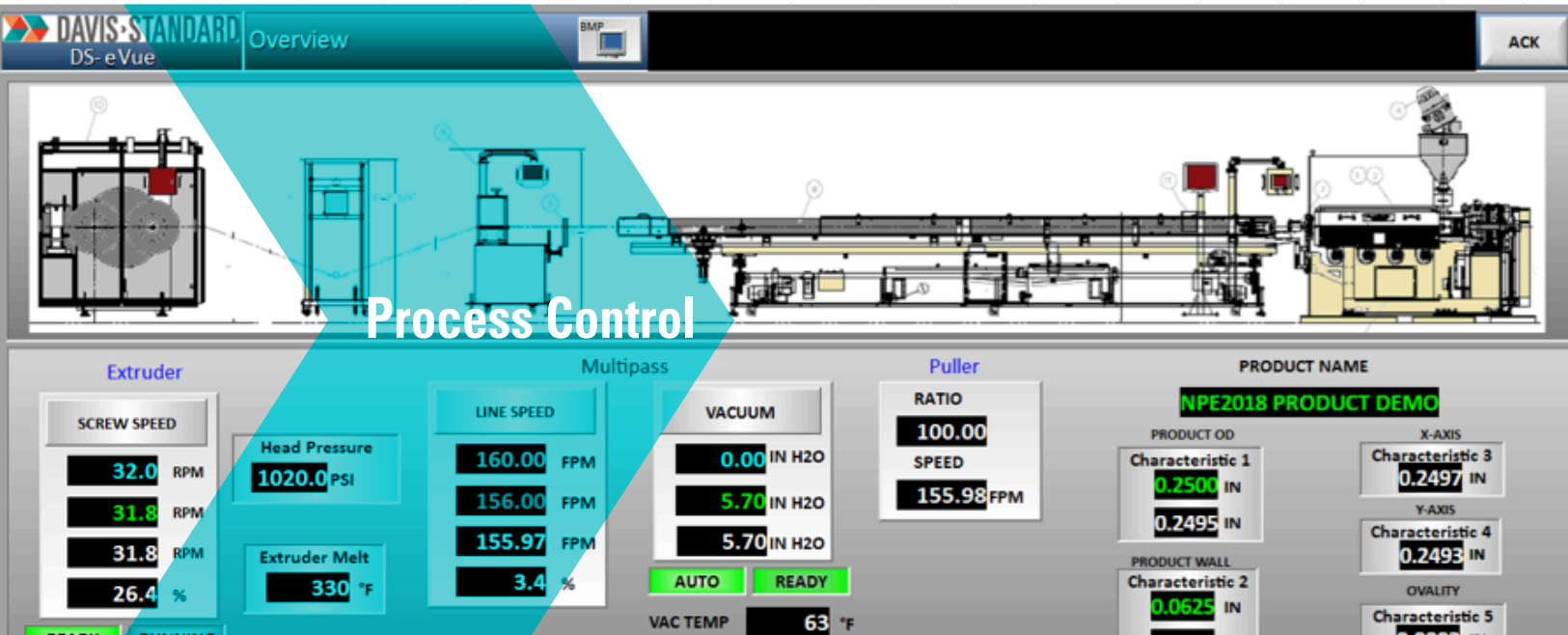




# DAVIS-STANDARD®

Where your ideas take shape.



## DS-Activ Check

### Overview

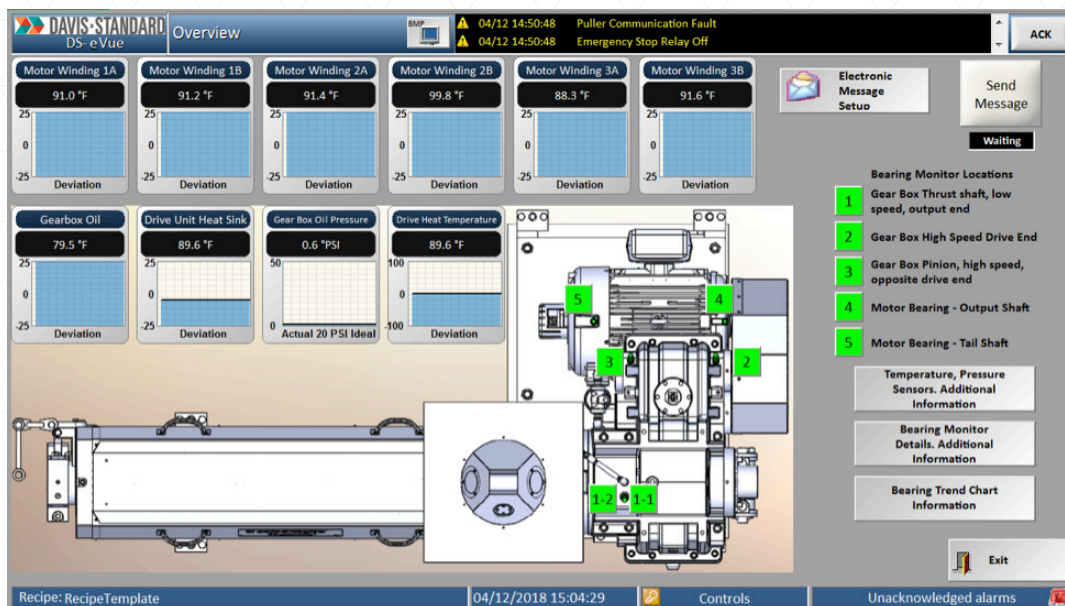
Provides customers with continuous machine condition monitoring. Available option for DS-eVue, EPIC III® and Integrator control systems provides early notifications of potential extruder failures by monitoring and trending conditions of key machine parameters. Users receive notifications via email and text, and continuous monitoring of production and machine status is available on smart devices and remote PCs.

### Features

- Email and SMS notifications provide managers and supervisors the ability to schedule production and maintenance activities
- Remote viewing allows continuous monitoring of machine conditions from smart device or remote PC
- Color coding on display offers quick indication of machine status



# DS-Activ Check



## Feature - Drive Power Unit

Digital communication with drive power unit allows for monitoring of key health indicator parameters

- Cumulative operation hours
- Number of run commands
- Cooling fan operation hours
- Cooling fan maintenance
- Capacitor maintenance
- Soft charge bypass relay
- IGBT maintenance
- Heatsink temperature

## Key parameters monitored include:

- Extruder reducer
- Reducer lubrication system
- Extruder motor characteristics
- Drive power unit
- Barrel heating and cooling
- Screw and barrel

## Reducer and Motor Section

Accelerometers located on input and output bearings provide vibration analysis of the reducer. Trending of the sensor input provides data to indicate the health of the bearings. Reducer lubrication system includes pressure, flow and temperature sensors that determine oil condition. Extruder motor supplied with temperature sensors located in motor windings as well as accelerometers located on drive and non-drive ends. Monitoring of instrumentation as well as speed and load provide indication of overall motor conditions and performance.

## Reducer and Motor Section

Feature utilizes enhanced control algorithms to monitor and trend characteristics of extruder barrel heaters and cooling. Trending of screw speed and head pressure over time for screw or barrel condition.

## Maintenance Screens

Provide quick view of machine condition and status utilizing color coding near instrumentation and trending charts. Color coding follows accepted standards:

- Green indication – operating within operating limits, no potential issues detected
- Yellow indication – warning condition of potential upcoming failure
- Red indication – failure is imminent

Warnings and fault indications result with notifications being sent to assigned customer contacts via email or SMS.